

12' X 24' ADA RESTROOM CUBE



Accessible & Comfortable

The 12' x 24' Restroom Cube is the ideal solution for jobsites, events, factories and remote locations thanks to its portability and quality.



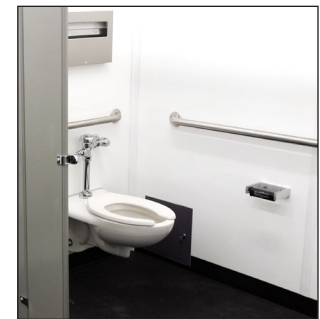
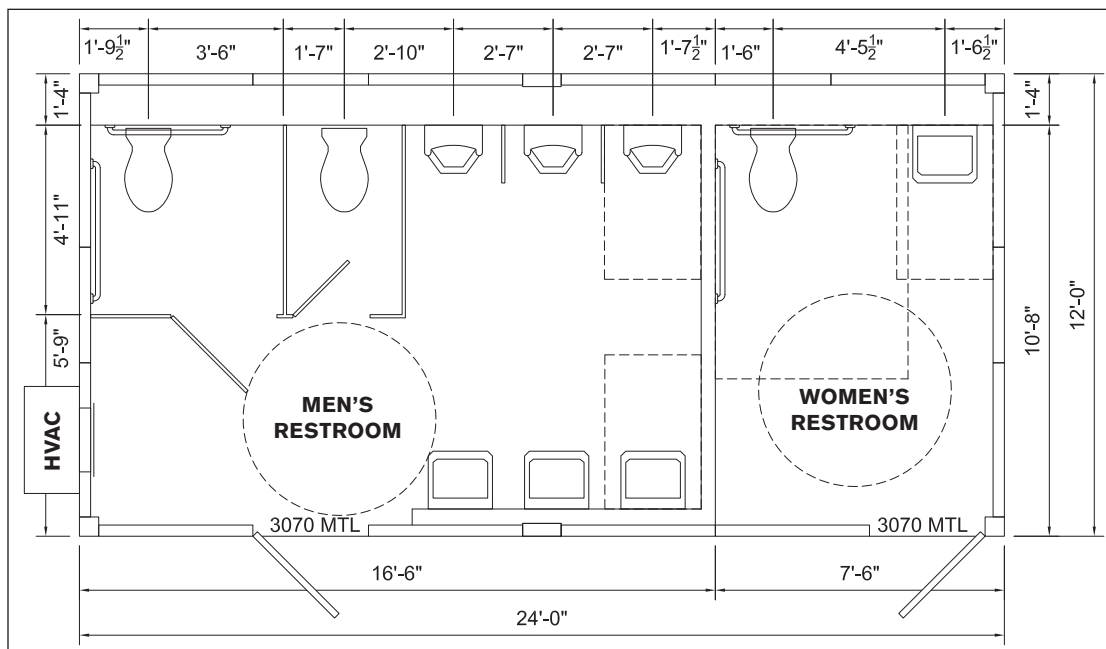
XTREME
CUBES CORP

12' X 24' ADA RESTROOM CUBE

Contact Us
 T: 800-497-1704
 E: cuberfq@xmfg.com

STANDARD FEATURES

- 12'w x 24'l x 10'h space frame with built-in fork pockets
- Imron polyurethane paint - Xtreme white
- 3" x 11' x 9' steel wall panels (4)
- 3" x 11' x 9' steel wall panels with 3' x 7' steel man door (2)
- Interior plumb walls
- Exterior single-phase load center and breakers
- 8' interior LED lights (2)
- 4' interior LED light
- Emergency ballasts (2)
- Exterior lights (2)
- Light switches (2)
- Duplex outlets (3)
- 2-ton wall-mount heat pump HVAC with ductwork (2)
- Exhaust fans (2)
- Wall-mount toilets (3)
- Wall-mount urinals (3)
- Lavatories (4)
- Electric tankless water heater
- Stall partitions (2)
- Urinal screens (2)
- Set of three ADA grab bars (2)
- 1-1/8" CDX plywood flooring with 0.05" HDPE laminate
- Utilite wall paneling
- R-21 spray foam insulation in walls
- R-28 spray foam insulation in floor
- R-35 spray foam insulation in roof
- All plumbing parts and labor



ABOUT XTREME CUBES

- Welded structural steel tube frame enhances the Cube's overall strength and increases options for customization.
- The standard Cube height is 10'. Cube lengths and widths are available in increments of 8', 10' and 12'.
- Modular wall panels can be easily customized with doors, windows, and other options.
- Premium components are utilized inside and out for durability and long life.
- Each Cube is engineered to your specific location conditions to withstand snow load, wind load and seismic events.
- Utility connections are preconfigured for a convenient and simple installation.
- Installation is quick and simple. When delivered, Cubes can be set in position and typically are ready to use in one to two days.

12' X 24' RESTROOM CUBE



Accessible & Comfortable

The 12' x 24' Restroom Cube is the ideal solution for jobsites, events, factories and remote locations thanks to its portability and quality.

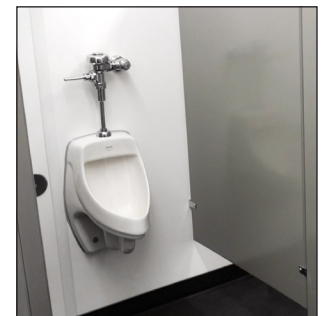
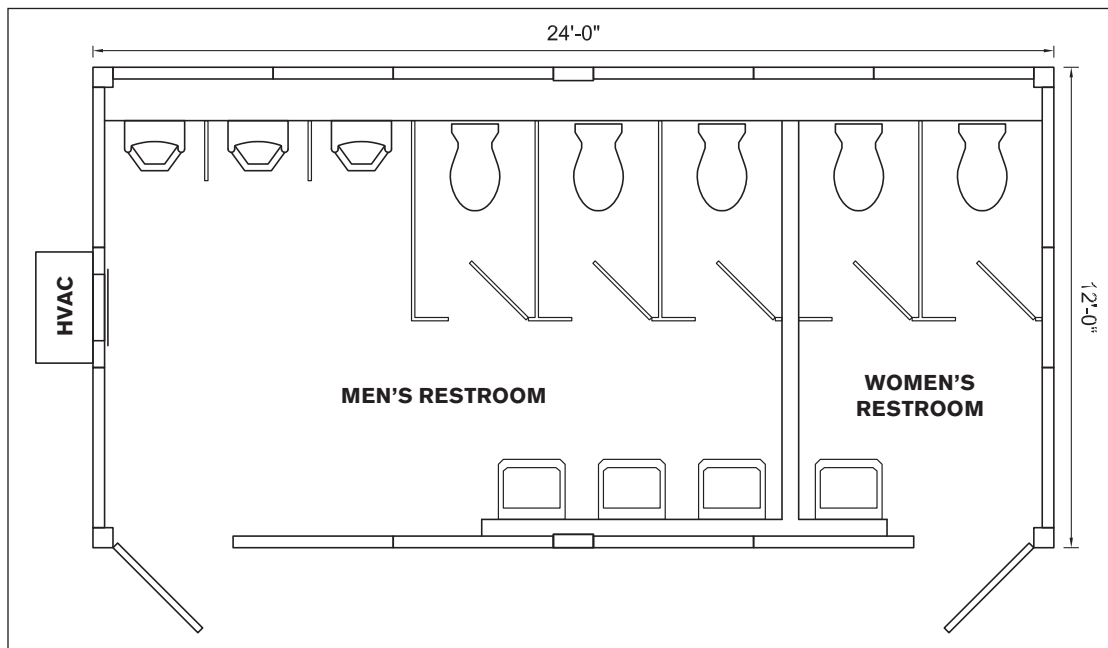


12' X 24' RESTROOM CUBE

Contact Us
T: 800-497-1704
E: cuberfq@xmfg.com

STANDARD FEATURES

- 1-1/8" CDX plywood flooring with 0.05" HDPE laminate
- Utilite wall paneling
- 3' x 7' exterior doors (2)
- Full insulation: R-21 on walls, R-28 on floor, R-35 on roof
- Exterior single-phase load center & breakers
- 8' interior LED light
- 4' interior LED light (2)
- Duplex outlets (3)
- Wall mounted heat pump HVAC unit with ductwork
- Exhaust Fans (2)
- Wall-mounted toilets (5)
- Wall-mounted urinals (3)
- Lavatories (4)
- Electric tankless water heater
- Stall partitions (5)
- Urinal screens (2)
- Plumbing connections & installation



ABOUT XTREME CUBES

- Welded structural steel tube frame enhances the Cube's overall strength and increases options for customization.
- The standard Cube height is 10'. Cube lengths and widths are available in increments of 8', 10' and 12'.
- Modular wall panels can be easily customized with doors, windows, and other options.
- Premium components are utilized inside and out for durability and long life.
- Each Cube is engineered to your specific location conditions to withstand snow load, wind load and seismic events.
- Utility connections are preconfigured for a convenient and simple installation.
- Installation is quick and simple. When delivered, Cubes can be set in position and typically are ready to use in one to two days.