

48' X 18' X 16' WASH RACK CUBE

**NEW 16'
HEIGHT**



Mobile Equipment Wash Station

The environmentally-friendly 48' x 18' x 16' Wash Rack Cube can be lengthened by 8' increments to wash off and contain mud, dirt and debris from industrial equipment and vehicles. Outfitted with a water recycler and washing wand as standard.

XTREME CUBES[™]

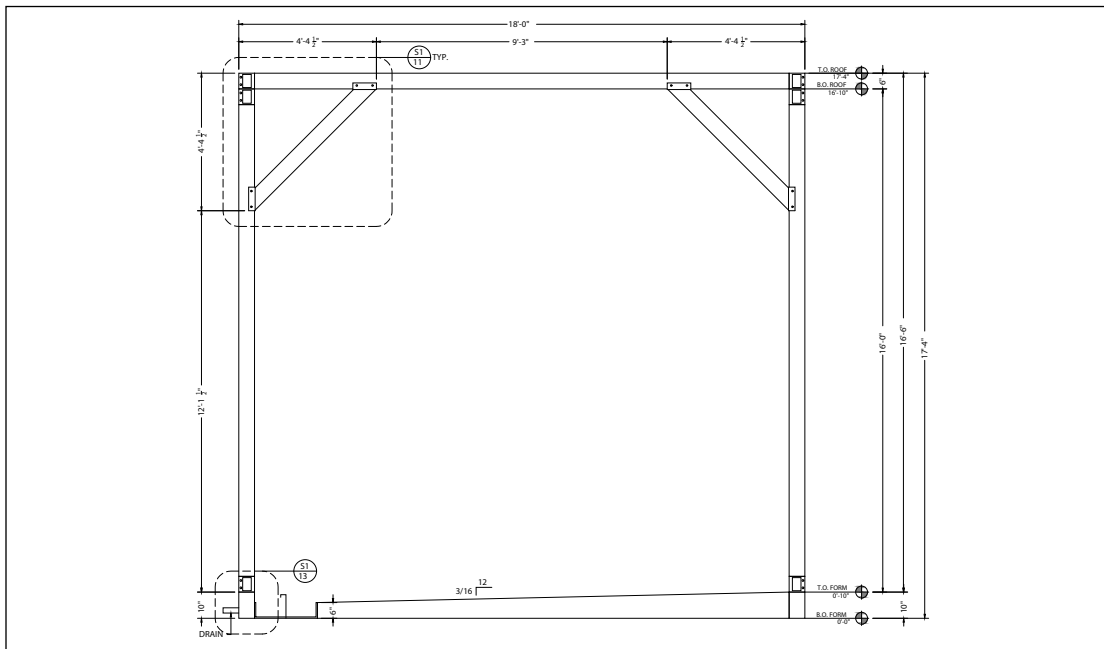
BY XTREME CUBES CORPORATION 

48' X 18' X 16' WASH RACK CUBE

Contact Us
T: 800-497-1704
E: cuberfq@xmfg.com

STANDARD FEATURES

- 8' x 16' wall weldments (12)
- 8' x 18' roof weldments (6)
- 9' x 16' wall weldments (2)
- Support braces
- Load center with disconnect
- Electrical quick-connect plugs
- 4' interior LED lights (12)
- Emergency ballast (6)
- Simplex outlets (10)
- Forced air heater
- Imron polyurethane paint - Xtreme white
- Polymetal wall paneling
- R-21 spray foam insulation in walls and roof



ABOUT XTREME CUBES

- Welded structural steel tube frame enhances the Cube's overall strength and increases options for customization.
- The Wash Rack Cube height is 16' and width is 18' as standard, but can be lengthened by 8' sections.
- Modular wall panels can be easily customized with doors, windows, and other options.
- Premium components are utilized inside and out for durability and long life.
- Each Cube is engineered to your specific location conditions to withstand snow load, wind load and seismic events.
- Utility connections are preconfigured for a convenient and simple installation.
- Installation is quick and simple. When delivered, Cubes can be set in position, connected to site utilities and ready to use immediately.

All Xtreme Cubes can be customized with a wide range of options. Speak to your Xtreme Cube representative for details and pricing.

XTREME CUBES
www.xtremecubescorp.com